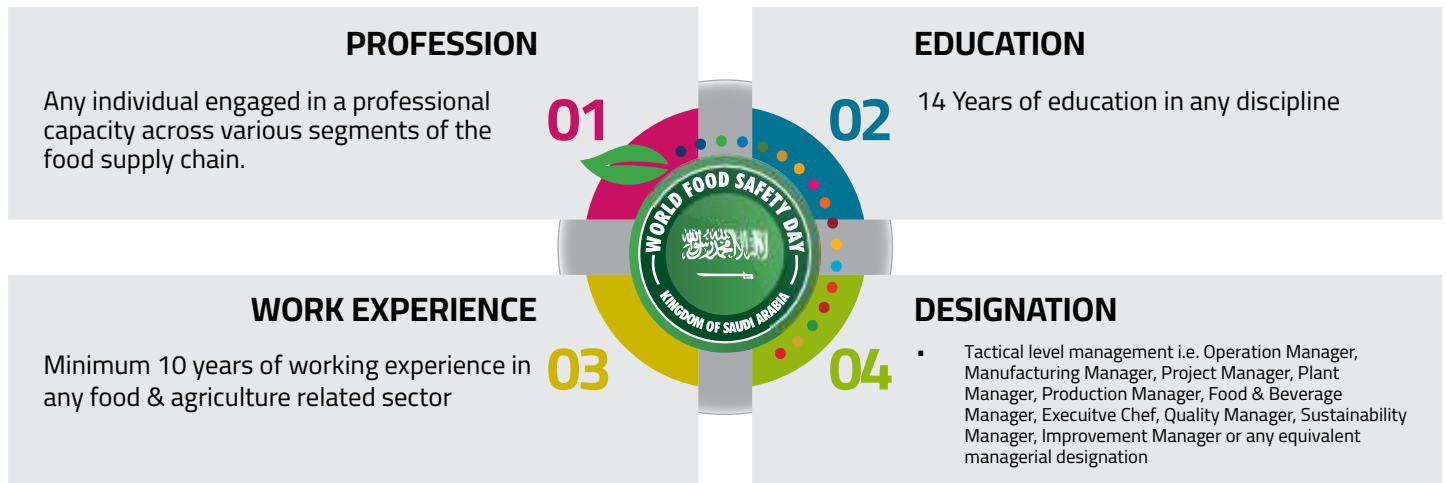


WORLD FOOD SAFETY DAY

EXECUTIVE BOARD FRAMEWORK & COMMITMENTS DESCRIPTION

1. WFSD EXECUTIVE BOARD MEMBERSHIP CRITERIA:



APPOINTMENTS ARE MERIT-BASED, RECOGNIZING INDIVIDUAL PROFESSIONAL ACHIEVEMENTS AND CONTRIBUTIONS RATHER THAN CURRENT OCCUPATIONAL STATUS.

2.FRAMEWORK FOR ENGAGEMENT AND COMMITMENTS:



- 2.1. This refined summary delineates the pivotal components and elevated expectations for WFSD Executive Board Membership, underlining the role's prestigious and independent nature designed to forge substantial advancements in the field of food safety, security and food supply chain sustainability.
- 2.2. You are entrusted to provide guidance to the WFSD Management regarding the inclusion of your professional designation and organizational affiliation in any World Food Safety Day (WFSD) communications or documentation.

WORLD FOOD SAFETY DAY

EXECUTIVE BOARD FRAMEWORK & COMMITMENTS DESCRIPTION

3. ROLES AND RESPONSIBILITIES OF A WFSD EXECUTIVE BOARD MEMBERS:

3.1 WFSD CONFERENCE ATTENDANCE:

Participate in World Food Safety Day events as your schedule permits, taking on the prestigious role of moderating panel discussions or contributing as a distinguished panelist, based on the alignment of your expertise and the event's thematic focus. Your registration and presence will be complimentary, with exclusive recognition as an honored guest at the event.

3.2. SPEAKER AND PRESENTER RECOMMENDATIONS:

Identify and recommend distinguished keynote speakers, insightful panelists, and dynamic presenters, meticulously selected for their profound expertise and comprehensive knowledge of food safety, security and food supply chain sustainability, ensuring that WFSD event is enriched with valuable perspectives and cutting-edge insights.

3.3. ADVOCACY AND AWARENESS:

Facilitate the WFSD Management to spearhead public awareness campaigns highlighting the importance of food safety, leveraging digital and traditional media to amplify the message of World Food Safety Day.

3.4. EDUCATIONAL PROGRAMS AND WORKSHOPS:

Support the WFSD Management to develop and deliver educational programs, workshops, and webinars aimed at various stakeholders, including consumers, food industry professionals within their capacity and level of authority, to raise awareness about food safety practices and principles in alignment with World Food Safety Day themes.

3.5. EXPLORE AND INNOVATION PROMOTION:

Patronage the WFSD Management to encourage and support research and innovation in food safety by facilitating forums for the exchange of ideas and findings, fostering a culture of continuous improvement and knowledge sharing on World Food Safety Day.

3.6. GLOBAL, REGIONAL AND LOCAL NETWORK AND ALLIANCE BUILDING:

Support the WFSD Management to build and strengthen a global network of food safety advocates, professionals, and organizations to share best practices, strategies, and resources, enhancing the global impact of World Food Safety Day initiatives.

These roles and responsibilities are designed to enhance the reach, impact, and significance of World Food Safety Day, engaging a broad spectrum of stakeholders in the collective effort to ensure food safety and security locally, regionally and internationally.

4. PROFESSIONAL ADVANTAGES OF ASSUMING THE ROLE AS A WFSD EXECUTIVE BOARD MEMBER:

4.1. Details of your role as a WFSD Executive Board Member will be uploaded to the World Food Safety Day website and integrated into related documentation. This recognition aims to acknowledge and appreciate your valuable contributions to WFSD programs.

4.2. As a token of your involvement, you will receive a "Certificate" explicitly stating your role as an WFSD Executive Board Member for the WFSD Program.

4.3. You will have the opportunity to obtain a "Personalized Poster" from the WFSD Media Team, which can be utilized to showcase your role within professional forums and on social media platforms.

4.4. You are welcome to record a 60-second video message addressing food safety-related issues, and this video will be made publicly available by the WFSD Management, further amplifying your impact and insights.